

27-29 March 2019

National Library of Australia, Canberra

Australian Academy of the Humanities'
2nd Humanities, Arts and Culture Data Summit
and
3rd international DARIAH Beyond Europe workshop



#DARIAHBeyondEurope #HACDS2019



Australian Research Data Commons

Humanities, Arts and Culture Data Summit
and DARIAH Beyond Europe Workshop

Digital research infrastructures for the arts and humanities: Sustainability, collaboration, vision, imagination, inspiration, advocacy and impact

March 2019

Canberra, ACT

PRESENTED BY

Ian Duncan

ian.duncan@ardc.edu.au

*Transforming digital infrastructure to support leading
edge research and innovation*



Australian Research Data Commons





National Innovation and Science Agenda

Home

National Collaborative Research Infrastructure Strategy (NCRIS)

For: [Business and Industry](#) | [Education authorities](#) | [Government agencies](#) | [Graduates](#) | [Media](#) | [Students](#)

NCRIS is a national network of world-class research infrastructure projects that support high-quality research that will drive greater innovation in the Australian research sector and the economy more broadly. Projects support strategically important research through which Australian researchers and their international partners can address key national and global challenges.

NCRIS

National Research Infrastructure for Australia

I need to find out about:

Type your search [Find](#)

[? Tips for searching this site](#)

[☰ Search documents](#)

Higher Education Research



Australian Government

NCRIS

National Research Infrastructure for Australia

Part of the NCRIS network

lia's world-class research

Census (NRI Census)

Infrastructure Strategy

eration key to improving

NCRIS

~40,000 domestic and international users each year.

\$3.3 billion invested since 2004

Attracting more than \$1 billion in co-investment

24 active projects, more than 200 institutions, over 1900 experts, researchers and facility managers.

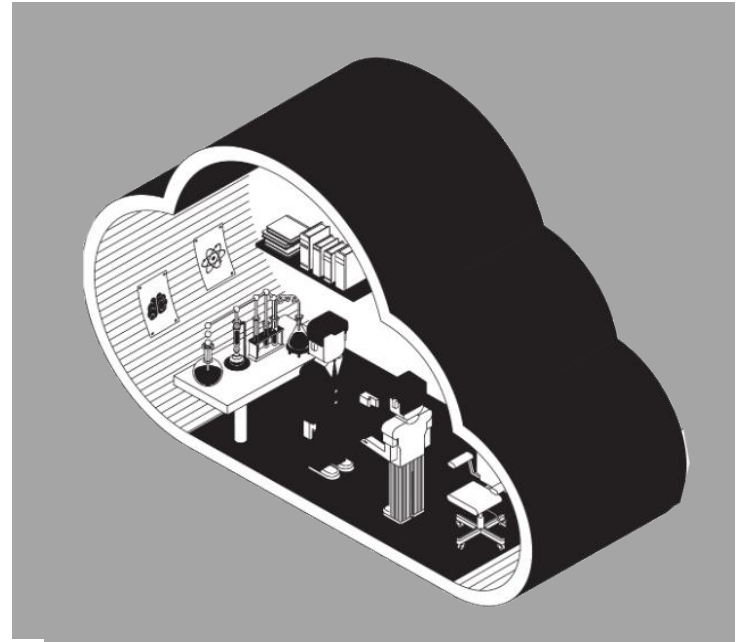
NCRIS

Scoping study	Description	Cost (\$m)	Length of study	Start
Enhanced ACCESS model	Enhancing the Australian Community Climate and Earth-System Simulator (ACCESS) weather model	\$0.200	12 months	2018
Synthetic biology	Explore national capability in synthetic biology through leadership in standardisation, biologics production and process automation.	\$0.200	12 months	2018
National Environmental Prediction System	Explore building upon existing NRIs in environmental science to provide a national environmental prediction system.	\$0.404	24 months	2018
HASS / Indigenous research platforms	To explore better integration of information in the Humanities, Arts and Social Sciences (HASS) and Indigenous research data platforms to maximise research outcomes, across a large and diverse group of stakeholders.	\$0.866	24 months	2020
Biobanks	Explore opportunities to network Australia's biobanks across agriculture, plant science, environmental science and biomedical science into a national rather than a disparate capability.	\$0.433	24 months	2020
Biosecurity	Scoping of the networked and additional capital investments required (including where) to maximise research in this area, given existing jurisdictional biosecurity research and operational measures.	\$0.433	24 months	2020

What we do – services, resources, people

50 internal staff, funding support for 110 external staff:

- Publication Services (DOI's, Handles, etc)
- Research Data Australia
- Research Cloud
- Virtual Labs
- Trusted National Collections and Repositories
- Skills and workforce development
- Government Policy and Advocacy
- International engagement and leadership



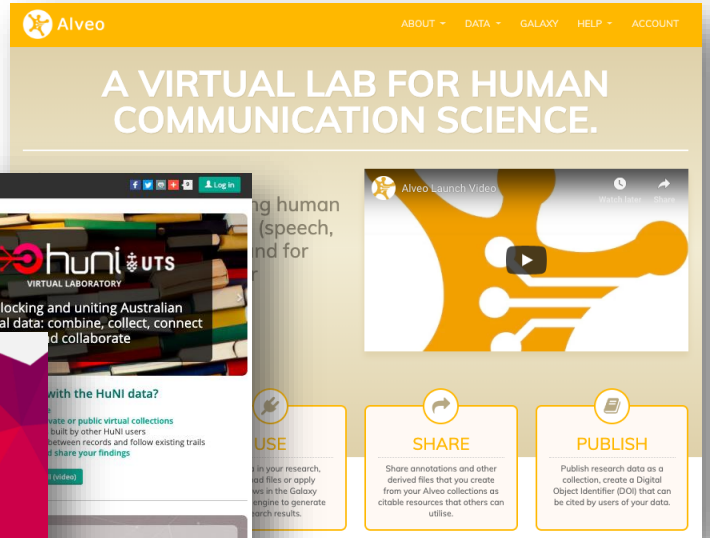
What we do – main themes of activity

- **Coordination and Coherence:**
 - Facilitating an “Australian research data commons”
- **People and Policy:**
 - Transforming culture and community
- **Data and Services:**
 - Maximising the value of Australia’s data assets
- **Software and Platforms:**
 - Enabling research insights & supporting collaboration
- **Storage and Compute:**
 - Providing foundation infrastructure



ARDC supports research across all disciplines: to enable world leading research, facilitate accelerated innovation, and enhance researchers' ability to translate outputs into societal benefit

ARDC history of engagement with HASS



Alveo ABOUT DATA GALAXY HELP ACCOUNT

A VIRTUAL LAB FOR HUMAN COMMUNICATION SCIENCE.

Alveo Launch Video

g human (speech, and for

USE

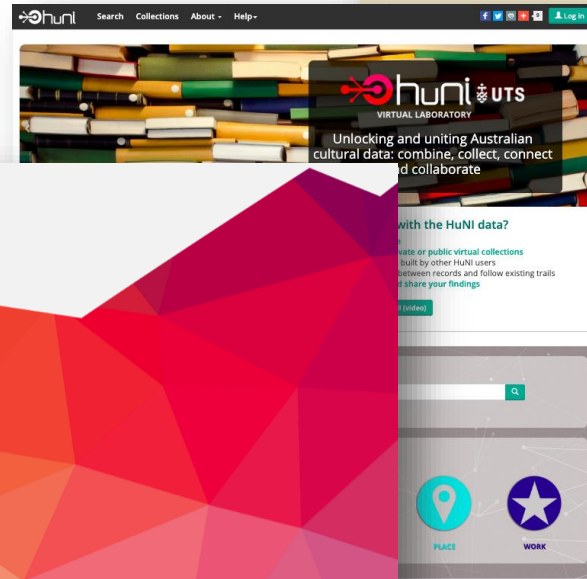
SHARE

PUBLISH

Pin your research, and files or apply in the Galaxy engine to generate search results.

Share annotations and other derived files that you create from your Alveo collections as citable resources that others can utilise.

Publish research data as a collection, create a Digital Object Identifier (DOI) that can be cited by users of your data.



huni Search Collections About Help

Unlocking and uniting Australian cultural data: combine, collect, connect and collaborate

with the HuNI data?

Private or public virtual collections built by other HUNI users between records and follow existing trails share your findings

PLACE WORK

Tinker

Welcome to Tinker!

This website is a place to learn, explore, create and collaborate with all things **Digital Humanities**.

Tinker is a prototype **Data Enhanced Virtual Laboratory (DEVL)**, designed to support Australian researchers in the Humanities, Arts and Social Sciences.

This online workspace encourages experimentation as a way to build skills and confidence for those employing digital tools and methods in HASS research.

Take a look around.

LET'S PLAY

(some of)

Our colleagues and partners



Australia has a vibrant environment supporting data-driven HASS research.

Can ARDC help accelerate this work by building connections across communities and accelerating outcomes through coordinated and collaborative effort?

'Big Ideas' in the sector

- transformations at scale
- new partnerships and new ways of working with collections and communities
- Skills for the humanities workforce.

Day
1

A great opportunity to test out ambitious ideas, think on a grand scale, and discuss the next big ideas

Knowledge exchange

- global connections
- building opportunities for future collaboration
- Infrastructure challenges

Days
2/3

Conversations can start collaborations, where can ARDC add value to or facilitate discussions?

The DARIAH experience

We're aiming to get the most out of our visitors (and all those present) as the Australian research environment enters a phase where data-driven humanities research is becoming increasingly well recognised and supported with great potential in the upcoming period.



Australian Research Data Commons

Thank you

www.ardc.edu.au